

Reinforcing the future...



Fiber Tech
Composite Pvt. Ltd.

INTRODUCTION

GRP PIPE / EQUIPMENT / PULTRUSION PRODUCTS MANUFACTURER

Kishan Cement is a leading Gujarat based CEMENT MANUFACTURING COMPANY offering a wide range of Products, and end-to-end solutions to customers. Presently KISHAN group of companies having 600 TPD cement manufacturing capacity and one more cement plant having 2000 TPD is under construction and expected to commission by Nov-2010. KISHAN group is also involved in the manufacturing of agro equipment, laminated sheet, diesel engines, Food, cotton and cotton based products. One of the group companies is engaged in infrastructure projects and undertaking turn key projects for the construction of canals and dams in Gujarat state.

The group turnover of KISHAN GROUP is Rs.850 crs last year. Fibertech composite Pvt Ltd is based at outskirts of Rajkot, We are manufacturing large dia FRP pipes used for water, sewer, power plants and industrial sectors. The plant initially has a capacity to produce 90kms of GRP pipes (avg. Diameter of 600 mm) offering complete solutions to customers.

We are also manufacturing PP/FRP & FRP EQUIPMENT like storage tanks, reaction vessels, scrubber tower, blower, ducting network , fume collection hoods, PP/FRP pipes & fittings ,FRP pipes and fittings with isophthalic, bisphenol and vinyl ester resins. Our range of PP/FRP & FRP TANKS starts from 100 ltrs to 100 kl capacity. Our scrubber system range starts from 1000 M3/HR TO 60,000 M3/HR ,DUCTING DIA from 300 mm to

2000 mm . FRP pipe is from Diameter from 100 to 1600 mm, lengths of 6, 12 mtrs, and pressures from 1 to 20 bars.

We are also manufacturing FRP PULTRUSION PRODUCTS like gratings, cable trays, rods and structural profiles like angles & channels. FRP Pultrusion products have wide applications in electrical industries for electrical insulation purpose, corrosion resistance and thus longer service life. FRP Pultrusion products are also very popular in chemical and other chemical processing industries where corrosion to the metal parts due to hazardous gases is a critical problem.

We have set up a plant having 40,000 sq.ft covered area and fully equipped with all basic and necessary manufacturing, testing and storage facilities. The total land acquired for this set up is around 15 acres considering future expansions.

FIBERTECH COMPOSITE PVT LTD committed to offer you high quality GRP PIPELINE AND PP/FRP AND FRP EQUIPMENT AND FRP PULTRUSION PRODUCTS for longer service life . We hope you will consider as potential supplier for your requirements. We assure you of our best attention and services all the time.

GROUP OF COMPANIES

Fiber Tech is a part of one of the fastest growing business group having its turnover around 850 Cr and is having vast experience in the field of Cement, Diesel Engine, Construction & infrastructure, Decorative Laminates, Cotton Ginning, Hydraulic Systems , Earthmoving machinery, Food and Agricultural Equipments. Such a vast experience of different fields has provided with a FUNDAMENTAL understanding of specific business challenges which is faced by any global company in today's world

KISHAN CEMENT: -

Kishan Cement Pvt. Ltd. is leading construction cement manufacturer in Gujarat, India with capacity to manufacturer Ordinary Portland Cement, Pozzolana Portland Cement, OPC, PPC, 42.5n, 43 & 53 Grade Cement. Before 14 years Kishan cement inaugurated with just 18000 Metric tons per year cement but it grew bigger and better year by year with current capacity of manufacturing more than 1 lac Metric Tons per year. Also it has fully computerized gravimetric feeding system, latest machinery in its plant and technical backup from best professionals in this field. A complete computerized feeding control gives perfect quality, which lead kishan cement to win national award that is "National Achievement Award for Quality Excellence" in 2002, New Delhi.

MAJOR CEMENT: -

Major Cement is leading high quality cement manufacturing company at Shapar, located in the center of saurashtra. It is a fully computerized plant which assures high quality production of nearly 1 lac MT/Annum. More over to keep costing down major cement has its own lease one the limestone (main raw material) available on the coastal region of Saurashtra. The steadily rising graph of sales of the MAJOR CEMENT is a proof of its consistent quality. Major cement has a strong dealer network of more than 350 dealers across India and Gulf countries. Now with a phenomenal growth of kishan cement and major cement this group is coming up with a bigger plant having capacity of 7.5 lacs MT/Annum at the end of 2010.

HI BOND CEMENT : -

With a phenomenal growth of Kishan cement and Major Cement the group is coming up with a bigger Cement Manufacturing plant with a Brand Name of HI BOND having capacity of 6.6 Lakhs MT/Annum and the same new venture will be operational by the end of 2010.

KISHNA INFRASTRUCTURE :-

Kishan infrastructure is engaged in the govt. infrastructure projects of construction dams and canals. Kishan infrastructure is approved as AA class contractor with Govt of Gujarat for civil & infrastructure projects. Kishan infrastructure is equipped with all basic machinery like earth moving equipments, dumpers & cranes

ADVANCE LAMINATES: -

Advance Laminates is sprawling across 135000 sq. ft. with a huge production capacity of 9,000 sq meters per day. Advance Laminates Pvt. Ltd. is India's leading manufacturer & exporter of Decorative Laminates, Post Formed Laminates, High Pressure Laminates, Metal Foil Laminates, Aluminum Foil Laminates, Perforated Laminates, Compact Laminates, Resin Bonded Laminates, Chalk Board Laminates, Marker Board Laminates, Industrial Laminates & Bullet Proof Harmonic Laminates. The Brand Name of the Company is **Hom Mica Laminates** & is India's first to develop Bullet Proof Laminates in whole industry.

PURUSHARTH DIESEL ENGINE: -

Purusharth Industries has been manufacturing quality products since 1965 and today, it is nation's leading manufacturer and exporter of diesel engines, diesel engine spares, automobile sleeves, diesel generating sets, turbine pumps, and etc. company invests heavily in R&D programs with their very own R&D department to stay ahead in the race of innovation & technical knowhow. With huge clientele in domestic market, Purusharth industries export its products in several countries across Africa, Gulf Countries, Asia & North

SADGURU COTTON PVT LTD: -

Sadguru Cotton Pvt. Ltd. an ISO 9001:2000 certified company started business in the year 2002. Company is equipped with state-of-art infrastructure backed by latest & fully automated technology plant for feeding of row cotton & pressing bales. We are also produces cotton oil cake, cotton seeds and cotton seed oil as well. With the futuristic approach to the market, recently Sadguru have increased their capacities to 300% in last 2 years and now Company is equipped with production capacity of 1000 bales (i.e. 170 Kgs.Per Bale.) per day. **At present, Sadguru Cotton is exporting its Indian cotton to Pakistan, Bangladesh, Indonesia, Thailand, Hongkong, Taiwan, China, Turkey & many more...**

VADALIA FOODS: -

Hi-Bond Cement Group, is now all set to begin a path breaking journey and cross yet another milestone, as it venture into Large Scale Food Manufacturing Industries in the name of "**Vadalia Foods**" in the village of Lothda in Rajkot District. **This plant is Located just 15kms. from Rajkot.** Vadalia Foods races of all existing plants in technology to serve Best Quality into the market. This tech friendly Food brand has upgraded itself with the latest innovative resources. Company has PLC Controlled Automatic Frying line which ensures fully controlled feeding, resulting to effective production control **AND COMPLETE ALIGNMENT WITH NEW FSSAI ACT.** **Needless to say, the running of such a technically advanced plant would generate handsome employment opportunities in the region.** This huge Food Plant has spread its wings over a vast land of over 20,000 Sq. Mtrs. Approx..

KISHAN AGRO INDUSTRIES: -

Kishan Agro Industries is one of the oldest agriculture equipments manufacturers in India, Gujarat, saurashtra with dynamic capability and state-of-art manufacturing resources. Kishan Agro Industries was established in the year 1968 and since last 4 decades company is serving the industry to great extent with its quality, in-time shipment and extensive supports. Company has nationwide market for its product agriculture equipments products, construction equipments and even earth moving equipments. Company also exports their products in South Africa, Philippines, Thailand, srilanka and U.A.E. At kishan agro industries, this is a separate Research & Development division which continuously involves in optimizing the products, demanded by wide range of clientele.

MAJOR CLIENTS - DOMESTIC

CLIENT

HPCL – MITTAL ENERGY LTD

INDIAN RARE EARTHS LTD

PUNJ LLOYD LTD – C/O STRATEGIC STORAGE OF CRUDE
OIL PROJECT - PERMUDE

BRIDGE & ROOF CO. (INDIA) LTD

ESSAR STEEL LTD.

NAYARA ENERGY LTD.

VA TECH WABAG LTD – C/O RELIANCE PETROCHEMICAL LTD

JYOTI LTD.

ADANI POWER LIMITED

L & T SPECIAL STEELS & HEAVY FORGING

COROMENDEL INTERNATIONAL LTD

CLIENT

SREE RAYALASEEMA ALKALIES AND ALLIED CHEMICALS LIMITED

ESSAR OIL LTD.

JINDAL SAW LTD

HERO STEEL LTD

ADITYA BIRLA GROUP (GRASIM).

THERMAX LIMITED

NECTAR LIFE SCIENCE LTD

JUBILANT LIFE SCIENCE LIMITED

IND-SWIFT LABORATORIES LIMITED

TATA STEEL BSL LTD

COASTAL GUJARAT POWER LIMITED

CLIENT
SARDA ENERGY & MINERAL LTD
VAIGAI CHEMICAL INDUSTRIES LTD.
PHILLIPS CARBON BLACK LTD
WELSPUN INDIA LTD
CIPLA LIMITED
JINDAL SAW LTD
TATA POWER SOLAR
JINDAL STAINLESS LIMITED
JSW STEEL COATED PRODUCT LTD
SIYARAM SILK MILLS LTD.
COROMANDEL INTERNATIONAL LIMITED

CLIENT
STERLITE TECHNOLOGIES LTD.
NUTRAPLUS INDIA LTD.
JITF ESIPL CETP (SITARGANJ) LTD
HINDUSTAN UNILEVER LTD
EDAC ENGINEERING LTD.
SARDA ENERGY & MINERAL LTD
STEEL STRIPS WHEELS LTD
ARVIND LTD
NEELACHAL ISPAT NIGAM LTD
RATNAGIRI GAS AND POWER PVT. LTD.
IPCA LIMITED

MAJOR CLIENTS - EXPORT

FOREIGN CUSTOMER

VETUS N V, NETHERLAND.

VETUS MEXWELL, USA.

SEMBBCORP SALALAH POWER & WATER, OMAN

SAKETH EXIM LTD – C/O EGYPT GAS

TOWER FOR ENERGY - IRAQ

VENORA INTERNATIONAL PVT LTD – SRI LANKA

QUALITY INTERNATIONAL CO LTD FZC - UAE

GOVERNMENT PROJECTS SUPPLY

SARDAR SAROVAR NARMADA NIGAM LTD

OMNIBUS INDUSTRIAL DEVELOPMENT CORPORATION –AUGMENTATION OF DIU
WATER SUPPLY SCHEME.

MARINE COMPOSITES - AUSTRALIA

ABDUL RAHIM TRADING- SAUDI ARABIA

FACTORY PRESENTATION GALLERY

ADMINISTRATIVE OFFICE BUILDING





FACTORY PREMISES



FACTORY PREMISES



FACTORY PREMISES



TOTAL AREA – 60,700 M²

BUILT UP AREA – 9200 M²

WORKSHOP AREA – 6000 M²

RAW MATERIAL STORAGE – 1000 M²

LAB AREA – 110 M²

OFFICE & OTHER – 980 M²

FACTORY PREMISES – TOTAL AREA 16 ACERS



FULLY EQUIPPED LABORATORY



FULLY EQUIPPED LABORATORY



**FIBER TECH
PRODUCT
RANGE**



FRP PIPE



FRP PIPE



FRP PIPE FITTINGS



PP/FRP SCRUBBER



FRP HORIZONTAL TANK



FRP CHEMICAL TANK



FRP HCL STORAGE TANK



PP/FRP TANKS



FRP PORTABLE WATER TANKS



PICKLING TANK





**FRP GRATINGS &
CHEQUERED PLATE**



**FRP PULTRUDED
GRATING**



FRP GRATING WITH CHEQUERED PLATE



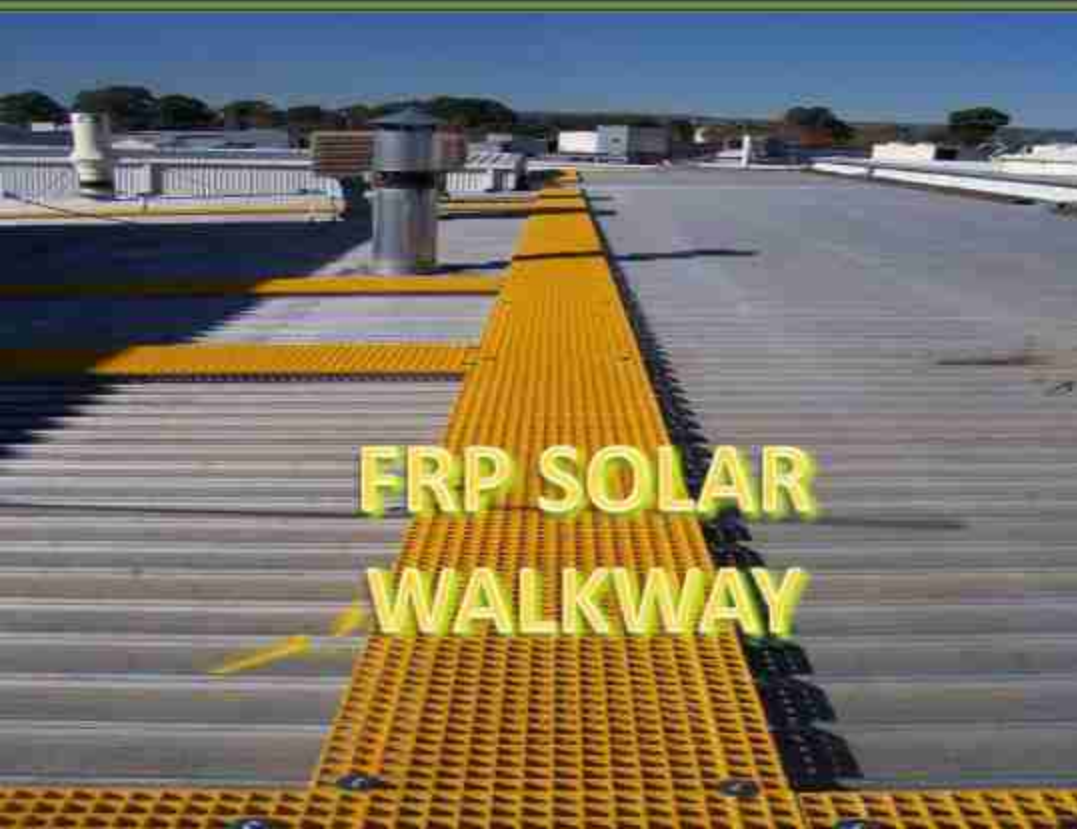
INDIA LARGEST FRP GATE



FRP HANDRAILS



FRP DRAINAGE



FRP SOLAR
WALKWAY



FRP PLATFORM



FRP PULTRUDED SECTIONS



FRP DOOR FRAMES



FRP RAIN GUTTER



FRP ROOFING SHEET

CERTIFICATE

भारतीय मानक ब्यूरो
BUREAU OF INDIAN STANDARDS

मानक चिन्ह लगाने की अनुमति
Licence for the use of STANDARD MARK

अनुमति (लाइसेंस) सं. सीएम/एल 3885283
LICENCE NO. CM/L - 3885283

यह लाइसेंस, भारतीय मानक ब्यूरो अधिनियम, 1986 (1986 का 63) द्वारा प्रदत्त शक्तियों के अधिनियम पर

मेसर्स फाइबरटेक कंपोज़ाईट प्राइवेट लिमिटेड
सर्वे नम्बर 20/21,
गाँव पीपलाना, तालुका कोटडा सांगानी,
जिला राजकोट, गुजरात 360024

को (जिसे इसमें आगे अनुमतिधारी कहा गया है) इसकी प्रथम अनुसूची के पहले कॉलम में दिखाए गए मानक चिन्ह का उपयोग करने की अनुमति (लाइसेंस) प्रदान करती है। इस मानक चिन्ह का उपयोग ऐसी वस्तु पर/प्रसंस्करण के संबंध में किया जाएगा जिसका उल्लेख इसकी उक्त अनुसूची के दूसरे कॉलम में किया गया है। यह वस्तु/प्रसंस्करण उक्त अनुसूची के तीसरे कॉलम में उल्लिखित संबंधित भारतीय मानक के अनुसार विनिर्मित होनी/के अनुरूप होगा।

1. By virtue of the power conferred on it by the BUREAU OF INDIAN STANDARDS ACT, 1986(63 of 1986) the BUREAU hereby grants to

M/s FIBERTECH COMPOSITE PRIVATE LIMITED
Survey No. 20/21,
Village Piplana,
Taluka Kotda Sangani,
District Rajkot,
Gujarat-360240

(hereinafter called 'the licensee') this licence to use the Standard Mark set out in the first column of the First Schedule hereto, upon or in respect of the article/process set out in the second column of the said Schedule which is manufactured in accordance with/conforms to the related Indian Standard(s) referred to in the third column of the said Schedule as from time to time amended or revised.

ISI CERTIFIED COMPANY

Certificate

Standard **ISO 9001:2008**

Certificate Registr. No. **85 100 001 11088**

TÜV Rheinland (India) Pvt. Ltd. Certifies:

Certificate Holder:

Fiber Tech Composite Pvt. Ltd.



Survey No. 20/21, Kothariya - Kotda Sangani
Road, Village- Piplana, Ta. : Kotda Sangani,
Dist. : Rajkot - 360 030, Gujarat, India.

Scope:

Manufacture of FRP/GRP Products like GRP
Pipes, FRP Equipments, FRP Pultrusion Products,
FRP Door, FRP Roof Sheet and Laminate Door.

An audit was performed, Report No. 11088. Proof has been
furnished that the requirements according to ISO 9001:2008 are
fulfilled.

Validity:

The due date for all future audits is 28-12 (dd.mm).

The certificate is valid from 2012-02-29 until 2015-02-27.



ISO : 9001:2008 CERTIFIED

Certificate

Standard **ISO 9001:2015**

Certificate Registr. No. **85 100 001 11088**



Certificate Holder:

Fibertech Composite Pvt. Ltd.

Survey No. 20/21, Kothariya-Kotda Sangani Road,
Village: Piplana, Ta. : Kotda Sangani,
Dist. Rajkot – 360 030, Gujarat, India

Scope:

Manufacture of FRP/GRP Products like GRP Pipes, FRP Tanks, FRP Pultrusion Products, FRP Door, FRP Roof Sheet and Laminate Door

Proof has been furnished by means of an audit that the requirements of ISO 9001:2015 are met.

The due date for all future audits is 28 - 12 (dd.mm).

Validity:

The certificate is valid from 2018-05-30 until 2021-02-27.

Answer 2..



Dangjale 2018-05-30

The Certification Body of
TUV Rheinland (India) Pvt. Ltd.
27/8, 2nd Cross Road,
Electronic City Phase 1,
Bangalore - 560 100, India.

Abstract The purpose of this study was to determine the effect of a 12-week, low-intensity, supervised walking program on the physical and psychological health of sedentary, middle-aged women. The study was a randomized, controlled trial. The subjects were 40 sedentary, middle-aged women who were randomly assigned to either a supervised walking program or a control group. The walking program consisted of 12 weeks of supervised walking, 3 times per week, for 30 minutes per session. The control group consisted of 20 women who did not participate in the walking program. The subjects were assessed at baseline and at 12 weeks for physical and psychological health. The walking program had a significant positive effect on the physical and psychological health of the subjects. The walking program significantly improved the subjects' physical health, as measured by the 6-minute walk test, and their psychological health, as measured by the Beck Depression Inventory and the State-Trait Anxiety Inventory. The walking program also significantly improved the subjects' quality of life, as measured by the SF-36. The walking program was well tolerated and had no adverse effects. The results of this study suggest that a 12-week, low-intensity, supervised walking program can improve the physical and psychological health of sedentary, middle-aged women.

The validity of this certificate is subject to future completion of surveillance audits assigned to the Company. The validity of this certificate can be nullified under certain conditions with the understanding that, subsequently,

©2004, 2005, 2006, 2007, 2008, 2009, 2010, 2011, 2012, 2013, 2014, 2015, 2016, 2017, 2018, 2019, 2020, 2021, 2022, 2023, 2024, 2025, 2026, 2027, 2028, 2029, 2030, 2031, 2032, 2033, 2034, 2035, 2036, 2037, 2038, 2039, 2040, 2041, 2042, 2043, 2044, 2045, 2046, 2047, 2048, 2049, 2050, 2051, 2052, 2053, 2054, 2055, 2056, 2057, 2058, 2059, 2060, 2061, 2062, 2063, 2064, 2065, 2066, 2067, 2068, 2069, 2070, 2071, 2072, 2073, 2074, 2075, 2076, 2077, 2078, 2079, 2080, 2081, 2082, 2083, 2084, 2085, 2086, 2087, 2088, 2089, 2090, 2091, 2092, 2093, 2094, 2095, 2096, 2097, 2098, 2099, 2100, 2101, 2102, 2103, 2104, 2105, 2106, 2107, 2108, 2109, 2110, 2111, 2112, 2113, 2114, 2115, 2116, 2117, 2118, 2119, 2120, 2121, 2122, 2123, 2124, 2125, 2126, 2127, 2128, 2129, 2130, 2131, 2132, 2133, 2134, 2135, 2136, 2137, 2138, 2139, 2140, 2141, 2142, 2143, 2144, 2145, 2146, 2147, 2148, 2149, 2150, 2151, 2152, 2153, 2154, 2155, 2156, 2157, 2158, 2159, 2160, 2161, 2162, 2163, 2164, 2165, 2166, 2167, 2168, 2169, 2170, 2171, 2172, 2173, 2174, 2175, 2176, 2177, 2178, 2179, 2180, 2181, 2182, 2183, 2184, 2185, 2186, 2187, 2188, 2189, 2190, 2191, 2192, 2193, 2194, 2195, 2196, 2197, 2198, 2199, 2200, 2201, 2202, 2203, 2204, 2205, 2206, 2207, 2208, 2209, 2210, 2211, 2212, 2213, 2214, 2215, 2216, 2217, 2218, 2219, 2220, 2221, 2222, 2223, 2224, 2225, 2226, 2227, 2228, 2229, 2230, 2231, 2232, 2233, 2234, 2235, 2236, 2237, 2238, 2239, 2240, 2241, 2242, 2243, 2244, 2245, 2246, 2247, 2248, 2249, 2250, 2251, 2252, 2253, 2254, 2255, 2256, 2257, 2258, 2259, 2260, 2261, 2262, 2263, 2264, 2265, 2266, 2267, 2268, 2269, 2270, 2271, 2272, 2273, 2274, 2275, 2276, 2277, 2278, 2279, 2280, 2281, 2282, 2283, 2284, 2285, 2286, 2287, 2288, 2289, 2290, 2291, 2292, 2293, 2294, 2295, 2296, 2297, 2298, 2299, 2300, 2301, 2302, 2303, 2304, 2305, 2306, 2307, 2308, 2309, 2310, 2311, 2312, 2313, 2314, 2315, 2316, 2317, 2318, 2319, 2320, 2321, 2322, 2323, 2324, 2325, 2326, 2327, 2328, 2329, 2330, 2331, 2332, 2333, 2334, 2335, 2336, 2337, 2338, 2339, 2340, 2341, 2342, 2343, 2344, 2345, 2346, 2347, 2348, 2349, 2350, 2351, 2352, 2353, 2354, 2355, 2356, 2357, 2358, 2359, 2360, 2361, 2362, 2363, 2364, 2365, 2366, 2367, 2368, 2369, 2370, 2371, 2372, 2373, 2374, 2375, 2376, 2377, 2378, 2379, 2380, 2381, 2382, 2383, 2384, 2385, 2386, 2387, 2388, 2389, 2390, 2391, 2392, 2393, 2394, 2395, 2396, 2397, 2398, 2399, 2400, 2401, 2402, 2403, 2404, 2405, 2406, 2407, 2408, 2409, 2410, 2411, 2412, 2413, 2414, 2415, 2416, 2417, 2418, 2419, 2420, 2421, 2422, 2423, 2424, 2425, 2426, 2427, 2428, 2429, 2430, 2431, 2432, 2433, 2434, 2435, 2436, 2437, 2438, 2439, 2440, 2441, 2442, 2443, 2444, 2445, 2446, 2447, 2448, 2449, 2450, 2451, 2452, 2453, 2454, 2455, 2456, 2457, 2458, 2459, 2460, 2461, 2462, 2463, 2464, 2465, 2466, 2467, 2468, 2469, 2470, 2471, 2472, 2473, 2474, 2475, 2476, 2477, 2478, 2479, 2480, 2481, 2482, 2483, 2484, 2485, 2486, 2487, 2488, 2489, 2490, 2491, 2492, 2493, 2494, 2495, 2496, 2497, 2498, 2499, 2500, 2501, 2502, 2503, 2504, 2505, 2506, 2507, 2508, 2509, 2510, 2511, 2512, 2513, 2514, 2515, 2516, 2517, 2518, 2519, 2520, 2521, 2522, 2523, 2524, 2525, 2526, 2527, 2528, 2529, 2530, 2531, 2532, 2533, 2534, 2535, 2536, 2537, 2538, 2539, 2540, 2541, 2542, 2543, 2544, 2545, 2546, 2547, 2548, 2549, 2550, 2551, 2552, 2553, 2554, 2555, 2556, 2557, 2558, 2559, 2560, 2561, 2562, 2563, 2564, 2565, 2566, 2567, 2568, 2569, 2570, 2571, 2572, 2573, 2574, 2575, 2576, 2577, 2578, 2579, 2580, 2581, 2582, 2583, 2584, 2585, 2586, 2587, 2588, 2589, 2590, 2591, 2592, 2593, 2594, 2595, 2596, 2597, 2598, 2599, 2600, 2601, 2602, 2603, 2604, 2605, 2606, 2607, 2608, 2609, 2610, 2611, 2612, 2613, 2614, 2615, 2616, 2617, 2618, 2619, 2620, 2621, 2622, 2623, 2624, 2625, 2626, 2627, 2628, 2629, 2630, 2631, 2632, 2633, 2634, 2635, 2636, 2637, 2638, 2639, 2640, 2641, 2642, 2643, 2644, 2645, 2646, 2647, 2648, 2649, 2650, 2651, 2652, 2653, 2654, 2655, 2656, 2657, 2658, 2659, 2660, 2661, 2662, 2663, 2664, 2665, 2666, 2667, 2668, 2669, 2670, 2671, 2672, 2673, 2674, 2675, 2676, 2677, 2678, 2679, 2680, 2681, 2682, 2683, 2684, 2685, 2

ISO : 9001:2015 CERTIFIED COMPANY

www.tuv.com



TÜVRheinland®
Precisely Right.



FIBER TECH COMPOSITE
REINFORCING THE FUTURE...

THANK YOU